

Solid State Relay

KMS Series Three-phase Motor Reversing Module

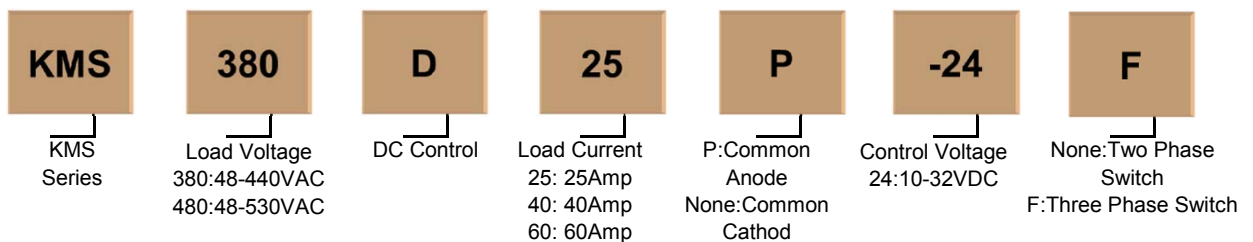


- Rated load current:25A, 40A,60A
- 10-32VDC input
- Internal RC/MOV protection circuit
- Two phase switch or three phase switch

Product Description

The KMS series motor reversing control module is specially developed for the three-phase motor control. Control loop that contains the logic interlock delay circuit,the switching times exceed 80ms, module load current rate 25A,40A,60A,load voltage rate 48-440VAC,48-530VAC,and built-in RC snubber circuit,widely used in some harsh occasions,such as the electric actuator control,including the implementing of the steam valve,flow control and shutoff valve.

Product Selection



Description	25A	40 A	60A
380VAC	KMS380D25-24	KMS380D40-24	KMS380D60-24
	KMS380D25-24F	KMS380D40-24F	KMS380D60-24F
480VAC	KMS480D25-24	KMS480D40-24	KMS480D60-24
	KMS480D25-24F	KMS480D40-24F	KMS480D60-24F

Technical Specification

Input Circuit

Control Voltage Range	10-32VDC
Minimum Turn-On Voltage	10VDC
Minimum Turn-Off Voltage	1VDC
Maximum Input Current	35mA
Minimum Reversible Switching Time	80ms

Output Circuit

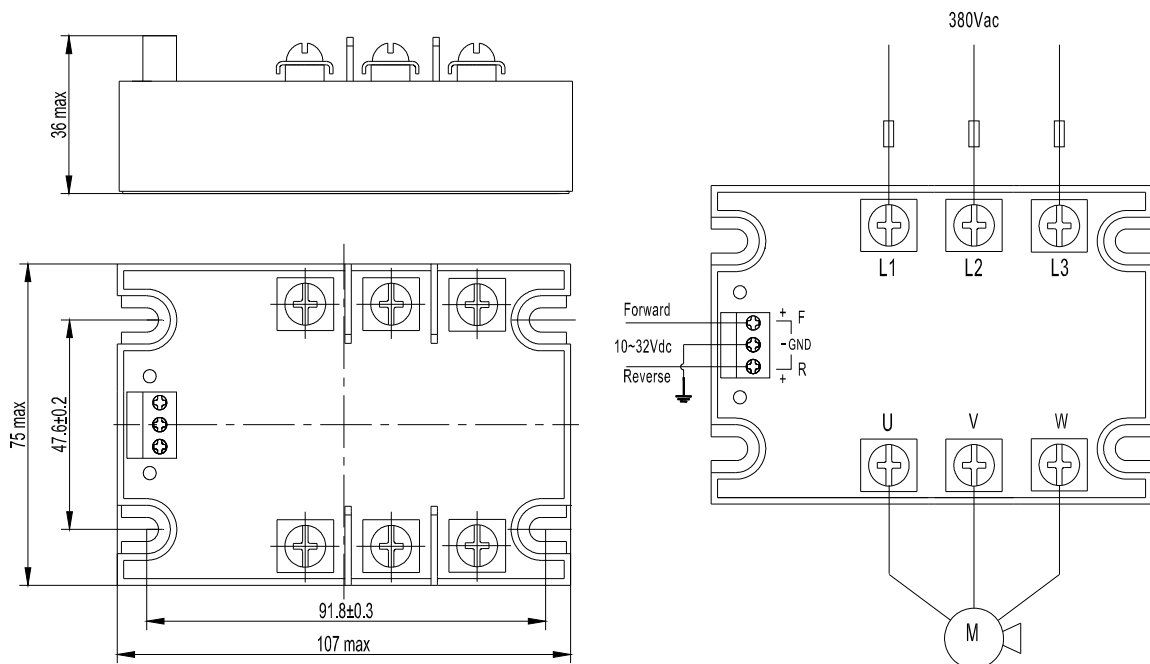
Load Voltage Range	380	48-440VAC
	480	48-530VAC

Maximum Transient Overvoltage	380	1100Vpk
	480	1200Vpk
Minimum Load Current		100mA
Maximum Turn-Off Time		20ms
Maximum Surge Current [@10ms]	25A	250A
	40A	400A
	60A	800A
Maximum Off-State Leakage Current [@ Rated Voltage]		5mA
Maximum On-State Voltage Drop [@ Rated Current]		1.5Vrms
Minimum Off-State dv/dt [@ Maximum Rated Voltage]		500V/μs
General Information		
Dielectric Strength, Input/Output/Base [50/60Hz]		≥4000Vrms / 2500Vrms
Ambient Operating Temperature Range		-30°C ~ +80°C
Ambient Storage Temperature Range		-30°C ~ +100 °C
Weight [typical]		338g
Working status indication		Forward:Green
		Reversion:Red

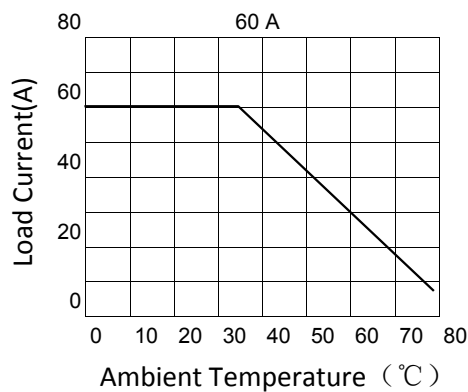
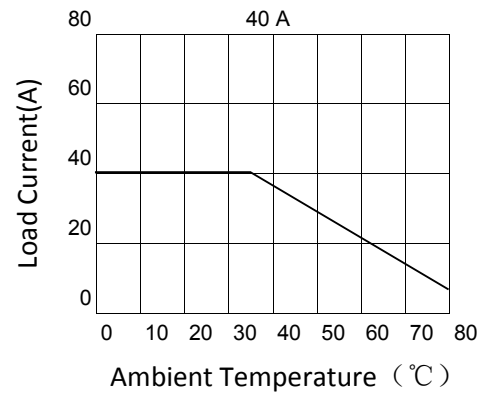
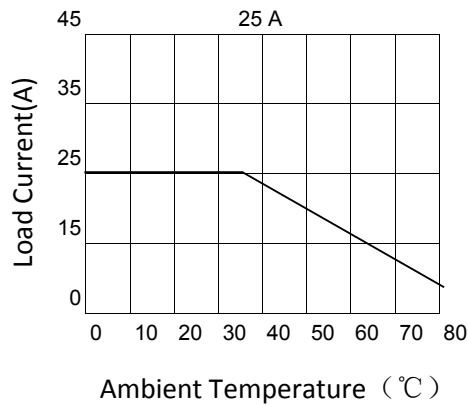
Application

3 Phase motor reversing control module,suitable for electric actuators,transformer OLTC device etc.

Installation



Thermal Curve



Important Notice

1. Please ensure that the module could bear the surge current if the high surge current.
2. Switching times must exceed 80ms.
3. Customized products can be provided upon request.

Product Certification

